

# 2011 CENSUS BULLETIN: Language

This report summarizes language data collected during the 2011 Census for Wellington, Dufferin, and Guelph (WDG). According to the 2011 Census, there are 121,685 residents of Guelph, 86,675 residents of Wellington County (excluding Guelph), and 56,880 residents of Dufferin County, for a total of 265,240 residents in WDG. In 2011, 99% of WDG residents had some knowledge of English; less than 1% of residents had no knowledge of an official language.





In Guelph, people who predominantly speak English at home make up  
**87.4%**  
of the population.

**0.8%**  
of people in WDG have no knowledge of either official language.

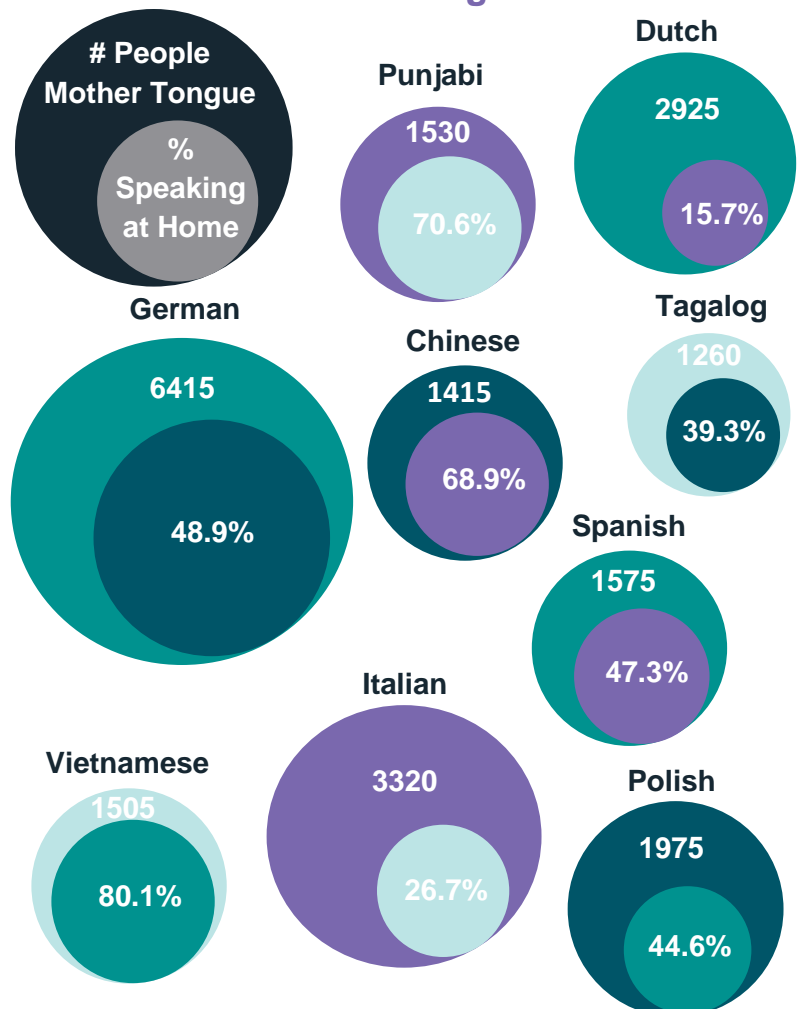
The proportion of Wellington County's population who speak only German at home is  
**3.3%**

In Dufferin County,  
**5.3%**  
of people have knowledge of both English and French.

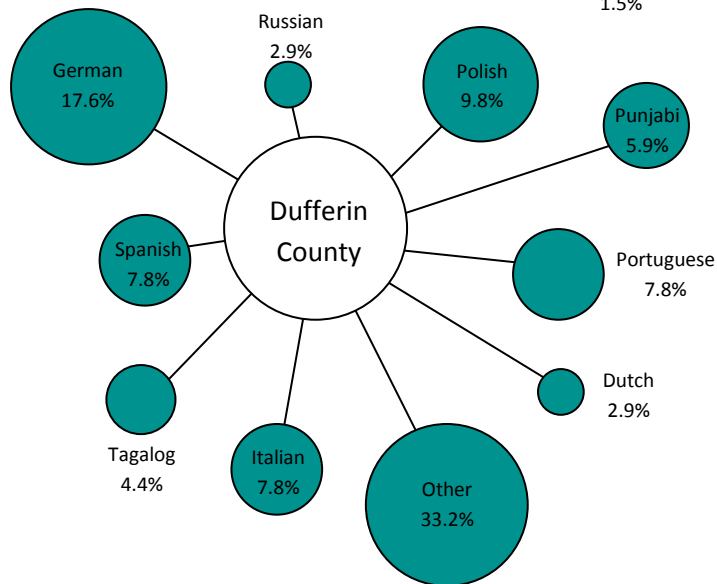
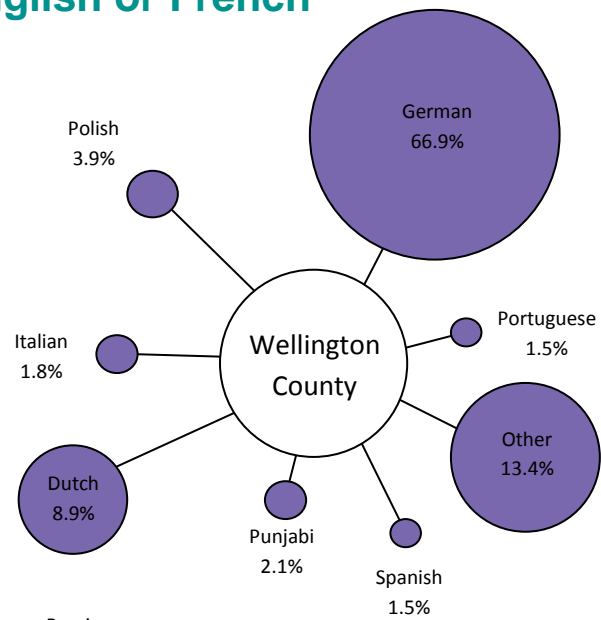
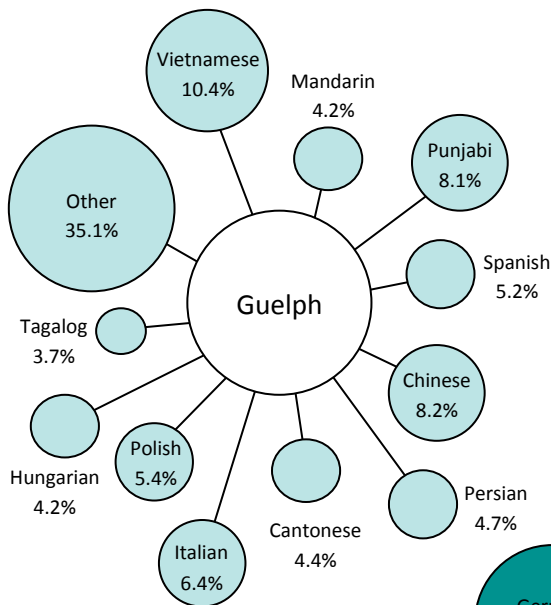
## Knowledge of Official Languages

	Wellington	Dufferin	Guelph
 English	93.96%	94.43%	90.25%
 French	0.02%	0.03%	0.04%
 Both	5.45%	5.30%	8.55%
 No Official Language	0.57%	0.26%	1.15%

## Percentage of People in WDG who Speak their Mother Tongue at Home



# Most Common Languages Spoken at Home for People who do not Speak English or French



**Did you know...**  
 The percentage of residents speaking "Chinese" at home include responses of Chinese, as well as Chinese languages other than Cantonese, Mandarin, Taiwanese, Chaochow (Teochow), Fukien, Hakka, and Shanghainese.

hallo

kumusta

ਸਤਿ ਸ੍ਰੀ ਅਕਾਲ।

привет

olá

szia

There are

**500**

residents across WDG who report their mother tongue as both English and French.

There are

**16,765**

people whose predominant home language is not English or French.

Throughout WDG, there are

**21,870**

people who report speaking two or more languages regularly at home.

ciao

ihola

سلام

你好

chào

cześć