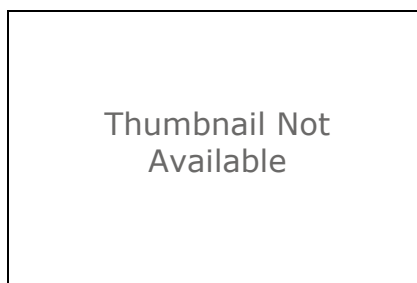


Sub-region boundaries (2017-01)

File Geodatabase Feature Class



Tags

sub-regions; LHINs; boundaries; cartographic

Summary

This file provides the boundaries, IDs and names for the 76 LHIN sub-regions in Ontario. It is current to January 2017, and is created and maintained by Health Analytics Branch.

Description

This file contains the **cartographic** boundaries, which do not always reflect the boundaries of the individual, standard geographic components that a sub-region is composed of. For example, in cases where an area is crossed by a LHIN boundary, the cartographic boundary is altered to follow the LHIN boundary. In areas where a sub-region boundary splits a standard geographic unit, a representative boundary is drawn, to reflect the sub-regions area. The basis for all sub-regions, however, are the 2011 Dissemination Areas and Census Subdivisions.

Credits

Health Analytics Branch, MOHLTC

Use limitations

There are no access and use limitations for this item.

Extent

West -95.154826 **East** -74.344030
North 56.859036 **South** 41.681435

Scale Range

Maximum (zoomed in) 1:5,000
Minimum (zoomed out) 1:150,000,000

ArcGIS Metadata ►

Topics and Keywords ►

THEMES OR CATEGORIES OF THE RESOURCE health

* CONTENT TYPE Downloadable Data

EXPORT TO FGDC CSDGM XML FORMAT AS RESOURCE DESCRIPTION No

THEME KEYWORDS Sub-regions; LHINs

[Hide Topics and Keywords ▲](#)

Citation ►

TITLE Sub-region boundaries (2017-01)
 CREATION DATE 2017-01-13 00:00:00
 PUBLICATION DATE 2017-01-20 00:00:00

EDITION 1

PRESENTATION FORMATS * digital map
 FGDC GEOSPATIAL PRESENTATION FORMAT vector digital data

OTHER CITATION DETAILS
 LHIN sub-region boundaries as of January 13, 2017

[Hide Citation ▲](#)

Citation Contacts ►

RESPONSIBLE PARTY
 INDIVIDUAL'S NAME Michael Pacey
 ORGANIZATION'S NAME Health Analytics Branch, HSIM, MOHLTC
 CONTACT'S POSITION Senior Health Analyst
 CONTACT'S ROLE custodian

[Hide Citation Contacts ▲](#)

Resource Details ►

DATASET LANGUAGES * English (UNITED STATES)
 DATASET CHARACTER SET utf8 - 8 bit UCS Transfer Format

STATUS completed
 SPATIAL REPRESENTATION TYPE * vector

* PROCESSING ENVIRONMENT Version 6.2 (Build 9200) ; Esri ArcGIS 10.3.1.4959

CREDITS
 Health Analytics Branch, MOHLTC

ARCGIS ITEM PROPERTIES
 * NAME Subregion_boundaries_FINAL_cartographic
 * LOCATION file:///\\moh\mohshare\hsimi\branches\HAB\LHINSupport\Projects\LHIN
 Renewal\Spatial\LHIN Renewal_Final sub-regions files.gdb
 * ACCESS PROTOCOL Local Area Network

[Hide Resource Details ▲](#)

Extents ►

EXTENT

GEOGRAPHIC EXTENT

BOUNDING RECTANGLE

EXTENT TYPE Extent used for searching

* WEST LONGITUDE -95.154826

* EAST LONGITUDE -74.344030

* NORTH LATITUDE 56.859036

* SOUTH LATITUDE 41.681435

* EXTENT CONTAINS THE RESOURCE Yes

EXTENT IN THE ITEM'S COORDINATE SYSTEM

* WEST LONGITUDE -95.154826

* EAST LONGITUDE -74.344030

* SOUTH LATITUDE 41.681435

* NORTH LATITUDE 56.859036

* EXTENT CONTAINS THE RESOURCE Yes

*Hide Extents ▲***Resource Points of Contact ►**

POINT OF CONTACT

INDIVIDUAL'S NAME Michael Pacey

ORGANIZATION'S NAME Health Analytics Branch, HSIM, MOHLTC

CONTACT'S POSITION Senior Health Analyst

CONTACT'S ROLE custodian

*Hide Resource Points of Contact ▲***Spatial Reference ►**

ARCGIS COORDINATE SYSTEM

* TYPE Geographic

* GEOGRAPHIC COORDINATE REFERENCE GCS_North_American_1983

* COORDINATE REFERENCE DETAILS

GEOGRAPHIC COORDINATE SYSTEM

WELL-KNOWN IDENTIFIER 4269

X ORIGIN -400

Y ORIGIN -400

XY SCALE 11258999068426.238

Z ORIGIN -100000

Z SCALE 10000

M ORIGIN -100000

M SCALE 10000

XY TOLERANCE 8.9831528411952133e-009

Z TOLERANCE 0.001

M TOLERANCE 0.001

HIGH PRECISION true

LEFT LONGITUDE -180

LATEST WELL-KNOWN IDENTIFIER 4269

WELL-KNOWN TEXT GEOGCS["GCS_North_American_1983",DATUM
["D_North_American_1983",SPHEROID["GRS_1980",6378137.0,298.257222101]],PRIMEM
["Greenwich",0.0],UNIT["Degree",0.0174532925199433],AUTHORITY["EPSG",4269]]

REFERENCE SYSTEM IDENTIFIER

DIMENSION horizontal

* VALUE 4269

* CODESPACE EPSG

* VERSION 8.6.2

[Hide Spatial Reference ▲](#)

Spatial Data Properties ►

VECTOR ►

* LEVEL OF TOPOLOGY FOR THIS DATASET geometry only

GEOMETRIC OBJECTS

FEATURE CLASS NAME Subregion_boundaries_FINAL_cartographic

* OBJECT TYPE composite

* OBJECT COUNT 76

[Hide Vector ▲](#)

ARCGIS FEATURE CLASS PROPERTIES ►

FEATURE CLASS NAME Subregion_boundaries_FINAL_cartographic

* FEATURE TYPE Simple

* GEOMETRY TYPE Polygon

* HAS TOPOLOGY FALSE

* FEATURE COUNT 76

* SPATIAL INDEX TRUE

* LINEAR REFERENCING FALSE

[Hide ArcGIS Feature Class Properties ▲](#)

[Hide Spatial Data Properties ▲](#)

Geoprocessing history ►

PROCESS

PROCESS NAME

DATE 2013-02-22 16:53:42

TOOL LOCATION C:\Program Files\ArcGIS\Desktop10.0\ArcToolbox\Toolboxes\Data Management Tools.tbx\CalculateField

COMMAND ISSUED

CalculateField gct_000b11a_e HLAUID "900702" VB #

INCLUDE IN LINEAGE WHEN EXPORTING METADATA No

PROCESS

PROCESS NAME

DATE 2013-02-22 16:56:01

TOOL LOCATION C:\Program Files\ArcGIS\Desktop10.0\ArcToolbox\Toolboxes\Data Management Tools.tbx\CalculateField

COMMAND ISSUED

CalculateField gct_000b11a_e HLAUID "5350002.00" VB #

INCLUDE IN LINEAGE WHEN EXPORTING METADATA No

PROCESS

PROCESS NAME

DATE 2013-02-22 16:56:45

TOOL LOCATION C:\Program Files\ArcGIS\Desktop10.0\ArcToolbox\Toolboxes\Data Management Tools.tbx\CalculateField

COMMAND ISSUED

CalculateField gct_000b11a_e HLAUID "900701" VB #

INCLUDE IN LINEAGE WHEN EXPORTING METADATA No

PROCESS

PROCESS NAME

DATE 2013-02-22 16:57:57

TOOL LOCATION C:\Program Files\ArcGIS\Desktop10.0\ArcToolbox\Toolboxes\Data Management Tools.tbx\CalculateField

COMMAND ISSUED

CalculateField gct_000b11a_e HLAUID "900708" VB #

INCLUDE IN LINEAGE WHEN EXPORTING METADATA No

PROCESS

PROCESS NAME

DATE 2013-02-22 17:03:41

TOOL LOCATION C:\Program Files\ArcGIS\Desktop10.0\ArcToolbox\Toolboxes\Data Management Tools.tbx\CalculateField

COMMAND ISSUED

CalculateField gct_000b11a_e HLAUID "900704" VB #

INCLUDE IN LINEAGE WHEN EXPORTING METADATA No

PROCESS

PROCESS NAME

DATE 2013-02-22 17:04:39

TOOL LOCATION C:\Program Files\ArcGIS\Desktop10.0\ArcToolbox\Toolboxes\Data Management Tools.tbx\CalculateField

COMMAND ISSUED

CalculateField gct_000b11a_e HLAUID "900704" VB #

INCLUDE IN LINEAGE WHEN EXPORTING METADATA No

PROCESS

PROCESS NAME

DATE 2013-02-22 17:05:40

TOOL LOCATION C:\Program Files\ArcGIS\Desktop10.0\ArcToolbox\Toolboxes\Data Management Tools.tbx\CalculateField

COMMAND ISSUED

CalculateField gct_000b11a_e HLAUID "900704" VB #

INCLUDE IN LINEAGE WHEN EXPORTING METADATA No

PROCESS

PROCESS NAME

DATE 2013-02-22 17:06:34

TOOL LOCATION C:\Program Files\ArcGIS\Desktop10.0\ArcToolbox\Toolboxes\Data Management Tools.tbx\CalculateField

COMMAND ISSUED

CalculateField gct_000b11a_e HLAUID "900704" VB #

INCLUDE IN LINEAGE WHEN EXPORTING METADATA No

PROCESS

PROCESS NAME

DATE 2013-02-22 17:08:38

TOOL LOCATION C:\Program Files\ArcGIS\Desktop10.0\ArcToolbox\Toolboxes\Data Management Tools.tbx\CalculateField

COMMAND ISSUED

CalculateField gct_000b11a_e HLAUID "900704" VB #

INCLUDE IN LINEAGE WHEN EXPORTING METADATA No

PROCESS

PROCESS NAME

DATE 2013-02-22 17:11:00

TOOL LOCATION C:\Program Files\ArcGIS\Desktop10.0\ArcToolbox\Toolboxes\Data Management Tools.tbx\CalculateField
 COMMAND ISSUED
 CalculateField gct_000b11a_e HLAUID "900702" VB #
 INCLUDE IN LINEAGE WHEN EXPORTING METADATA No

PROCESS

PROCESS NAME
 DATE 2013-02-22 17:12:38
 TOOL LOCATION C:\Program Files\ArcGIS\Desktop10.0\ArcToolbox\Toolboxes\Data Management Tools.tbx\CalculateField
 COMMAND ISSUED
 CalculateField gct_000b11a_e HLAUID "900705" VB #
 INCLUDE IN LINEAGE WHEN EXPORTING METADATA No

PROCESS

PROCESS NAME
 DATE 2013-02-22 17:16:28
 TOOL LOCATION C:\Program Files\ArcGIS\Desktop10.0\ArcToolbox\Toolboxes\Data Management Tools.tbx\CalculateField
 COMMAND ISSUED
 CalculateField gct_000b11a_e HLAUID "900705" VB #
 INCLUDE IN LINEAGE WHEN EXPORTING METADATA No

PROCESS

PROCESS NAME
 DATE 2013-02-22 17:21:48
 TOOL LOCATION C:\Program Files\ArcGIS\Desktop10.0\ArcToolbox\Toolboxes\Data Management Tools.tbx\CalculateField
 COMMAND ISSUED
 CalculateField gct_000b11a_e HLAUID "900706" VB #
 INCLUDE IN LINEAGE WHEN EXPORTING METADATA No

PROCESS

PROCESS NAME
 DATE 2014-06-04 11:35:24
 TOOL LOCATION c:\program files\arcgis\desktop10.0\ArcToolbox\Toolboxes\Data Management Tools.tbx\CopyFeatures
 COMMAND ISSUED
 CopyFeatures "I:\hsimi\Div_Projects\GIS\Data\Census Boundaries\Census 2011 \gct_000b11a_e\gct_000b11a_e.shp"
 "I:\hsimi\Branches\HAB\LHINSupport\Projects\Census Profiles\SPATIAL\2011_CD_CSD_CT_DA_to_LHIN.gdb\gct_000b11a_e" # 0 0 0
 INCLUDE IN LINEAGE WHEN EXPORTING METADATA No

PROCESS

PROCESS NAME
 DATE 2015-10-20 13:03:52
 TOOL LOCATION c:\program files\arcgis\desktop10.2\ArcToolbox\Toolboxes\Data Management Tools.tbx\CalculateField
 COMMAND ISSUED
 CalculateField "gct_000b11a_e selection selection" HLAUID 800213 VB #
 INCLUDE IN LINEAGE WHEN EXPORTING METADATA No

PROCESS

PROCESS NAME
 DATE 2015-10-20 13:05:06
 TOOL LOCATION c:\program files\arcgis\desktop10.2\ArcToolbox\Toolboxes\Data Management Tools.tbx\CalculateField

COMMAND ISSUED

CalculateField "gct_000b11a_e selection selection" HLAUID 800214 VB #

INCLUDE IN LINEAGE WHEN EXPORTING METADATA No

PROCESS

PROCESS NAME

DATE 2015-10-20 13:06:55

TOOL LOCATION c:\program files\arcgis\desktop10.2\ArcToolbox\Toolboxes\Data Management Tools.tbx\CalculateField

COMMAND ISSUED

CalculateField "gct_000b11a_e selection selection" HLAUID 800215 VB #

INCLUDE IN LINEAGE WHEN EXPORTING METADATA No

PROCESS

PROCESS NAME

DATE 2016-08-25 14:42:55

TOOL LOCATION c:\program files\arcgis\desktop10.3\ArcToolbox\Toolboxes\Data Management Tools.tbx\CalculateField

COMMAND ISSUED

CalculateField Subregion_boundaries Status "preliminary" VB #

INCLUDE IN LINEAGE WHEN EXPORTING METADATA No

PROCESS

PROCESS NAME

DATE 2016-08-25 14:43:32

TOOL LOCATION c:\program files\arcgis\desktop10.3\ArcToolbox\Toolboxes\Data Management Tools.tbx\CalculateField

COMMAND ISSUED

CalculateField Subregion_boundaries LHIN "07" VB #

INCLUDE IN LINEAGE WHEN EXPORTING METADATA No

PROCESS

PROCESS NAME

DATE 2016-08-30 10:44:32

TOOL LOCATION c:\program files\arcgis\desktop10.3\ArcToolbox\Toolboxes\Data Management Tools.tbx\CalculateField

COMMAND ISSUED

CalculateField Subregion_boundaries SRUID "1304" VB #

INCLUDE IN LINEAGE WHEN EXPORTING METADATA No

PROCESS

PROCESS NAME

DATE 2016-09-09 11:01:03

TOOL LOCATION c:\program files\arcgis\desktop10.3\ArcToolbox\Toolboxes\Data Management Tools.tbx\CalculateField

COMMAND ISSUED

CalculateField Subregion_boundaries Pop_2011 0 VB #

INCLUDE IN LINEAGE WHEN EXPORTING METADATA No

PROCESS

PROCESS NAME

DATE 2016-09-09 11:03:29

TOOL LOCATION c:\program files\arcgis\desktop10.3\ArcToolbox\Toolboxes\Data Management Tools.tbx\CalculateField

COMMAND ISSUED

CalculateField Subregion_boundaries LHIN 2 VB #

INCLUDE IN LINEAGE WHEN EXPORTING METADATA No

PROCESS

PROCESS NAME

DATE 2016-09-09 11:04:52

TOOL LOCATION c:\program files\arcgis\desktop10.3\ArcToolbox\Toolboxes\Data Management Tools.tbx\CalculateField

COMMAND ISSUED

CalculateField Subregion_boundaries Status "preliminary" VB #

INCLUDE IN LINEAGE WHEN EXPORTING METADATA No

PROCESS

PROCESS NAME

DATE 2016-09-12 12:53:21

TOOL LOCATION c:\program files\arcgis\desktop10.3\ArcToolbox\Toolboxes\Data Management Tools.tbx\CalculateField

COMMAND ISSUED

CalculateField Subregion_boundaries_cartographic Status "preliminary" VB #

INCLUDE IN LINEAGE WHEN EXPORTING METADATA No

PROCESS

PROCESS NAME

DATE 2016-09-14 10:02:34

TOOL LOCATION c:\program files\arcgis\desktop10.3\ArcToolbox\Toolboxes\Data Management Tools.tbx\CalculateField

COMMAND ISSUED

CalculateField Subregion_boundaries_cartographic Pop_2011 0 VB #

INCLUDE IN LINEAGE WHEN EXPORTING METADATA No

PROCESS

PROCESS NAME

DATE 2016-09-20 14:28:45

TOOL LOCATION c:\program files\arcgis\desktop10.3\ArcToolbox\Toolboxes\Data Management Tools.tbx\CalculateField

COMMAND ISSUED

CalculateField Subregion_boundaries_cartographic LHIN 1 VB #

INCLUDE IN LINEAGE WHEN EXPORTING METADATA No

PROCESS

PROCESS NAME

DATE 2016-09-20 14:29:39

TOOL LOCATION c:\program files\arcgis\desktop10.3\ArcToolbox\Toolboxes\Data Management Tools.tbx\CalculateField

COMMAND ISSUED

CalculateField Subregion_boundaries_cartographic Status "preliminary" VB #

INCLUDE IN LINEAGE WHEN EXPORTING METADATA No

PROCESS

PROCESS NAME

DATE 2016-09-21 12:20:53

TOOL LOCATION c:\program files\arcgis\desktop10.3\ArcToolbox\Toolboxes\Data Management Tools.tbx\CalculateField

COMMAND ISSUED

CalculateField Subregion_boundaries_cartographic LHIN 12 VB #

INCLUDE IN LINEAGE WHEN EXPORTING METADATA No

PROCESS

PROCESS NAME

DATE 2016-09-30 12:06:41

TOOL LOCATION c:\program files\arcgis\desktop10.3\ArcToolbox\Toolboxes\Data Management Tools.tbx\CalculateField

COMMAND ISSUED

CalculateField Subregion_boundaries_cartographic LHIN 8 VB #
 INCLUDE IN LINEAGE WHEN EXPORTING METADATA No

PROCESS

PROCESS NAME

DATE 2016-12-07 14:53:59

TOOL LOCATION c:\program files\arcgis\desktop10.3\ArcToolbox\Toolboxes\Data Management Tools.tbx\CalculateField

COMMAND ISSUED

CalculateField Subregion_boundaries_cartographic_Dec2016 Status "preliminary"
 VB #

INCLUDE IN LINEAGE WHEN EXPORTING METADATA No

PROCESS

PROCESS NAME

DATE 2016-12-07 14:54:09

TOOL LOCATION c:\program files\arcgis\desktop10.3\ArcToolbox\Toolboxes\Data Management Tools.tbx\CalculateField

COMMAND ISSUED

CalculateField Subregion_boundaries_cartographic_Dec2016 Pop_2011 0 VB #

INCLUDE IN LINEAGE WHEN EXPORTING METADATA No

PROCESS

PROCESS NAME

DATE 2017-01-16 14:04:13

TOOL LOCATION c:\program files\arcgis\desktop10.3\ArcToolbox\Toolboxes\Data Management Tools.tbx\CalculateField

COMMAND ISSUED

CalculateField Subregion_boundaries_FINAL_Cartographic LHIN [SRUID] VB #

INCLUDE IN LINEAGE WHEN EXPORTING METADATA No

PROCESS

PROCESS NAME

DATE 2017-01-16 14:04:33

TOOL LOCATION c:\program files\arcgis\desktop10.3\ArcToolbox\Toolboxes\Data Management Tools.tbx\CalculateField

COMMAND ISSUED

CalculateField Subregion_boundaries_FINAL_Cartographic LHIN 0 VB #

INCLUDE IN LINEAGE WHEN EXPORTING METADATA No

PROCESS

PROCESS NAME

DATE 2017-01-16 14:05:20

TOOL LOCATION c:\program files\arcgis\desktop10.3\ArcToolbox\Toolboxes\Data Management Tools.tbx\CalculateField

COMMAND ISSUED

CalculateField Subregion_boundaries_FINAL_Cartographic LHIN_num [SRUID] VB #

INCLUDE IN LINEAGE WHEN EXPORTING METADATA No

PROCESS

PROCESS NAME

DATE 2017-02-10 13:35:31

TOOL LOCATION c:\program files\arcgis\desktop10.3\ArcToolbox\Toolboxes\Data Management Tools.tbx\CalculateField

COMMAND ISSUED

CalculateField Subregion_boundaries_FINAL_cartographic SR_NAME_ENG [sub_region]
 VB #

INCLUDE IN LINEAGE WHEN EXPORTING METADATA No

PROCESS**PROCESS NAME**

DATE 2017-02-10 13:35:45

TOOL LOCATION c:\program files\arcgis\desktop10.3\ArcToolbox\Toolboxes\Data Management Tools.tbx\CalculateField

COMMAND ISSUEDCalculateField Subregion_boundaries_FINAL_cartographic SR_NAME_FR [SR_French]
VB #

INCLUDE IN LINEAGE WHEN EXPORTING METADATA No

*Hide Geoprocessing history ▲***Distribution ►****DISTRIBUTION FORMAT**

* NAME File Geodatabase Feature Class

VERSION 1

*Hide Distribution ▲***Fields ►****DETAILS FOR OBJECT Subregion_boundaries_FINAL_cartographic ►**

* TYPE Feature Class

* ROW COUNT 76

FIELD OBJECTID_1 ►

* ALIAS OBJECTID_1

* DATA TYPE OID

* WIDTH 4

* PRECISION 0

* SCALE 0

* FIELD DESCRIPTION

Internal feature number.

* DESCRIPTION SOURCE

Esri

* DESCRIPTION OF VALUES

Sequential unique whole numbers that are automatically generated.

*Hide Field OBJECTID_1 ▲***FIELD Shape ►**

* ALIAS Shape

* DATA TYPE Geometry

* WIDTH 0

* PRECISION 0

* SCALE 0

* FIELD DESCRIPTION

Feature geometry.

* DESCRIPTION SOURCE

Esri

- * DESCRIPTION OF VALUES
Coordinates defining the features.

Hide Field Shape ▲

FIELD SRUID ►

- * ALIAS SRUID
- * DATA TYPE String
- * WIDTH 4
- * PRECISION 0
- * SCALE 0

Hide Field SRUID ▲

FIELD LHIN ►

- * ALIAS LHIN
- * DATA TYPE Double
- * WIDTH 8
- * PRECISION 0
- * SCALE 0

Hide Field LHIN ▲

FIELD Shape_Length ►

- * ALIAS Shape_Length
- * DATA TYPE Double
- * WIDTH 8
- * PRECISION 0
- * SCALE 0
- * FIELD DESCRIPTION
Length of feature in internal units.
- * DESCRIPTION SOURCE
Esri
- * DESCRIPTION OF VALUES
Positive real numbers that are automatically generated.

Hide Field Shape_Length ▲

FIELD Shape_Area ►

- * ALIAS Shape_Area
- * DATA TYPE Double
- * WIDTH 8
- * PRECISION 0
- * SCALE 0
- * FIELD DESCRIPTION
Area of feature in internal units squared.
- * DESCRIPTION SOURCE

Esri

* DESCRIPTION OF VALUES

Positive real numbers that are automatically generated.

Hide Field Shape_Area ▲

FIELD SR_NAME_ENG ►

* ALIAS SR_NAME_ENG
 * DATA TYPE String
 * WIDTH 50
 * PRECISION 0
 * SCALE 0

Hide Field SR_NAME_ENG ▲

FIELD SR_NAME_FR ►

* ALIAS SR_NAME_FR
 * DATA TYPE String
 * WIDTH 50
 * PRECISION 0
 * SCALE 0

Hide Field SR_NAME_FR ▲

FIELD Pop_2015 ►

* ALIAS Pop_2015
 * DATA TYPE Double
 * WIDTH 8
 * PRECISION 0
 * SCALE 0

Hide Field Pop_2015 ▲

FIELD percent ►

* ALIAS percent
 * DATA TYPE Double
 * WIDTH 8
 * PRECISION 0
 * SCALE 0

Hide Field percent ▲

FIELD X ►

* ALIAS X
 * DATA TYPE Double
 * WIDTH 8
 * PRECISION 0
 * SCALE 0

Hide Field X ▲

FIELD Y ►

* ALIAS Y
 * DATA TYPE Double
 * WIDTH 8
 * PRECISION 0
 * SCALE 0

Hide Field Y ▲

Hide Details for object Subregion_boundaries_FINAL_cartographic ▲

Hide Fields ▲

Metadata Details ►

* METADATA LANGUAGE English (UNITED STATES)
 METADATA CHARACTER SET utf8 - 8 bit UCS Transfer Format
 METADATA IDENTIFIER 0397C4E0-1BDF-4861-B035-E4B2ECC016BA
 SCOPE OF THE DATA DESCRIBED BY THE METADATA * dataset
 SCOPE NAME * dataset
 * LAST UPDATE 2018-11-07
 ARCGIS METADATA PROPERTIES
 METADATA FORMAT ArcGIS 1.0
 STANDARD OR PROFILE USED TO EDIT METADATA ItemDescription
 METADATA STYLE North American Profile of ISO19115 2003
 CREATED IN ARCGIS FOR THE ITEM 2017-01-20 11:18:46
 LAST MODIFIED IN ARCGIS FOR THE ITEM 2018-11-07 15:22:32
 AUTOMATIC UPDATES
 HAVE BEEN PERFORMED Yes
 LAST UPDATE 2018-11-07 15:22:32

Hide Metadata Details ▲

Metadata Contacts ►

METADATA CONTACT
 INDIVIDUAL'S NAME Michael Pacey
 ORGANIZATION'S NAME Health Analytics Branch, HSIM, MOHLTC
 CONTACT'S POSITION Senior Health Analyst
 CONTACT'S ROLE custodian

Hide Metadata Contacts ▲

Metadata Maintenance ►

MAINTENANCE
 UPDATE FREQUENCY as needed

MAINTENANCE CONTACT

INDIVIDUAL'S NAME Michael Pacey
ORGANIZATION'S NAME Health Analytics Branch, HSIM, MOHLTC
CONTACT'S POSITION Senior Health Analyst
CONTACT'S ROLE custodian

Hide Metadata Maintenance ▲

Metadata Constraints ►**CONSTRAINTS****LIMITATIONS OF USE**

The positional accuracy of the LHIN sub-region boundary files does not support cadastral, surveying or engineering applications.

Hide Metadata Constraints ▲

FGDC Metadata (read-only) ▼